

STRING BOX MERZ MSB-244-16-1000-MDM-BC



PCE  MERZ

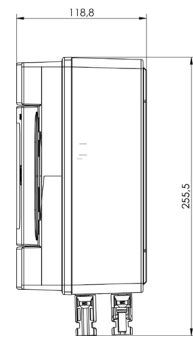
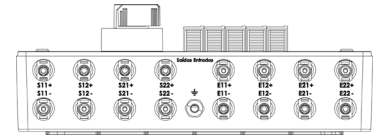
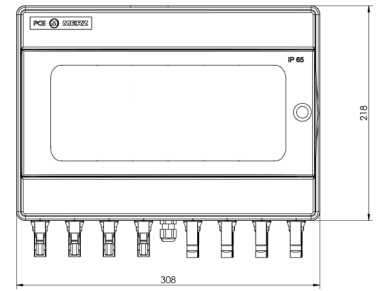
switch to Quality!

TECHNICAL DATA

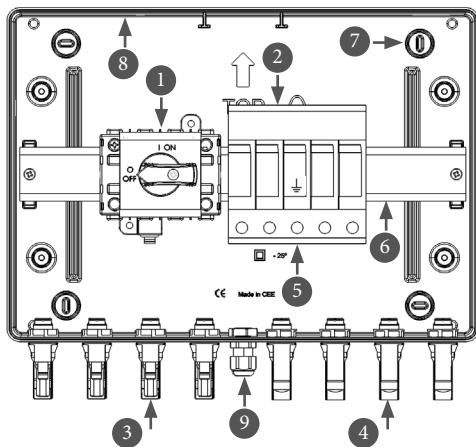
1 MPPT / 2 MPPT

Article	MSB-244-16-1000-MDM-BC
Incoming strings	4
Outgoing strings	4
MPPTs	2
Input (DC)	
Maximum Voltage	1005 Vdc
Max. Current per string	16 A; acc IEC60947
Max. Current per MPPT	32 A (16 A per string): acc IEC60947
Connection type	Stäubli, MC4
Cross section	4 mm ² up to 6 mm ²
Earthing cable input	Cable gland PG21
Output (DC)	
Max current per string	16 A (32 A per MPPT) ; acc IEC60947
Connection type	Stäubli MC4
Cross section	4mm ² up to 6mm ²
SURGEPROTECTIONDEVICE (SPD)	
Class	Type 2
Max. PV voltage (UCPV)	1005 VDC
Voltage protection level (UP)	≤ 4 kV
Approvals	IEC 60364-7-712
DCSWITCHDISCONNECTOR	
Model	Merz, MDC10A-442V
Max. Current DC-PV1 at 1000 VDC per MPPT	32 A, DC-PV1 acc IEC60947
MPPTs	2 (4 contacts in total)
ENCLOSURE	
Protection degree and impact resistance , acc IEC 60529	IP 65; IK08
Dimensions	12 DIN 218X308X118,8mm

MECHANICAL DIMENSIONS

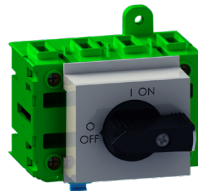


COMPONENTS



- 1 DC Switch Disconnecter MDC10A
- 2 Surge Protection Device (SPD)
- 3 MC4 Connectors Stäubli PV-KBT4
- 4 MC4 Connectors Stäubli PV-KST4
- 5 Grounding terminal
- 6 DIN rail
- 7 Fixing points
- 8 Enclosure
- 9 Grounding Cable gland

MERZ MDC10A



DEHN SPD



STÄUBLI MC4 CONNECTORS

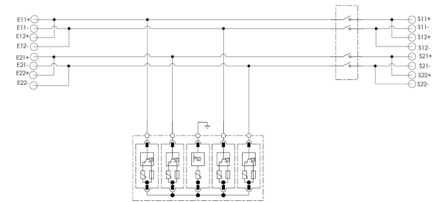
PV-KBT4



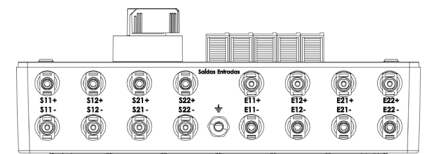
PV-KST4



WIRING DIAGRAM



Connect outgoing strings as follows:



Connect incoming strings as follows:



MERZ Schaltgeräte GMBH + CO KG

Kernerstraße 15 Telefon +49 (0) 7971 252-252
D-74405 Gaildorf Fax +49 (0) 7971 252-351



info@merz-schaltgeraete.de
www.merz-schaltgeraete.de



Switch to Quality!